



# NF-1 Polyclonal Antibody

<b>Catalog No</b>	YP-Ab-01896
<b>Isotype</b>	IgG
<b>Reactivity</b>	Human;Mouse;Rat
<b>Applications</b>	WB;IHC;IF;ELISA
<b>Gene Name</b>	NFIA
<b>Protein Name</b>	Nuclear factor 1 A-type
<b>Immunogen</b>	The antiserum was produced against synthesized peptide derived from human Nuclear Factor 1. AA range:11-60
<b>Specificity</b>	NF-1 Polyclonal Antibody detects endogenous levels of NF-1 protein.
<b>Formulation</b>	Liquid in PBS containing 50% glycerol, 0.5% BSA and 0.02% sodium azide.
<b>Source</b>	Polyclonal, Rabbit,IgG
<b>Purification</b>	The antibody was affinity-purified from rabbit antiserum by affinity-chromatography using epitope-specific immunogen.
<b>Dilution</b>	WB: 1/500 - 1/2000. IHC: 1/100 - 1/300. ELISA: 1/20000.. IF 1:50-200
<b>Concentration</b>	1 mg/ml
<b>Purity</b>	≥90%
<b>Storage Stability</b>	-20°C/1 year
<b>Synonyms</b>	NFIA; KIAA1439; Nuclear factor 1 A-type; NF1-A; Nuclear factor 1/A; CCAAT-box-binding transcription factor; CTF; Nuclear factor I/A; NF-I/A; NFI-A; TGGCA-binding protein; NFIB; Nuclear factor 1 B-type; NF1-B; Nuclear factor 1/B; CCAAT-box-b
<b>Observed Band</b>	55kD
<b>Cell Pathway</b>	Nucleus.
<b>Tissue Specificity</b>	Brain,Epithelium,Skeletal muscle,Testis,
<b>Function</b>	function:Recognizes and binds the palindromic sequence 5'-TTGGCNNNNNGCCAA-3' present in viral and cellular promoters and in the origin of replication of adenovirus type 2. These proteins are individually capable of activating transcription and replication.,PTM:Phosphorylated upon DNA damage, probably by ATM or ATR.,similarity:Belongs to the CTF/NF-I family.,similarity:Contains 1 CTF/NF-I DNA-binding domain.,subunit:Binds DNA as a homodimer.,
<b>Background</b>	This gene encodes a member of the NF1 (nuclear factor 1) family of transcription factors. Multiple transcript variants encoding different isoforms have been found for this gene. [provided by RefSeq, Sep 2011],



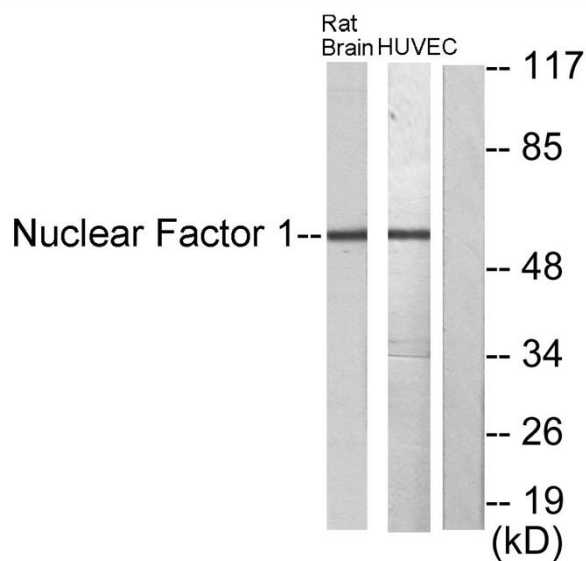
matters needing attention

Avoid repeated freezing and thawing!

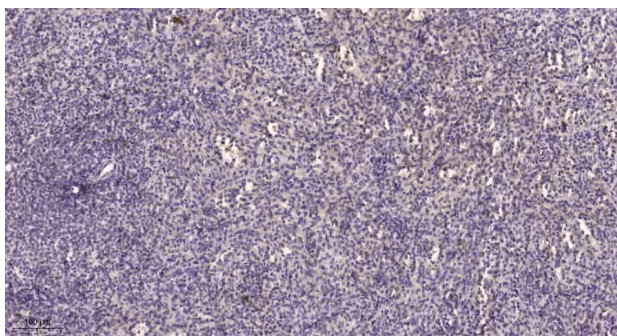
Usage suggestions

This product can be used in immunological reaction related experiments. For more information, please consult technical personnel.

## Products Images



Western blot analysis of lysates from rat brain and HUVEC cells, using Nuclear Factor 1 Antibody. The lane on the right is blocked with the synthesized peptide.



Immunohistochemical analysis of paraffin-embedded human spleen. 1, Tris-EDTA, pH9.0 was used for antigen retrieval. 2 Antibody was diluted at 1:200(4° overnight). 3, Secondary antibody was diluted at 1:200(room temperature, 45min).